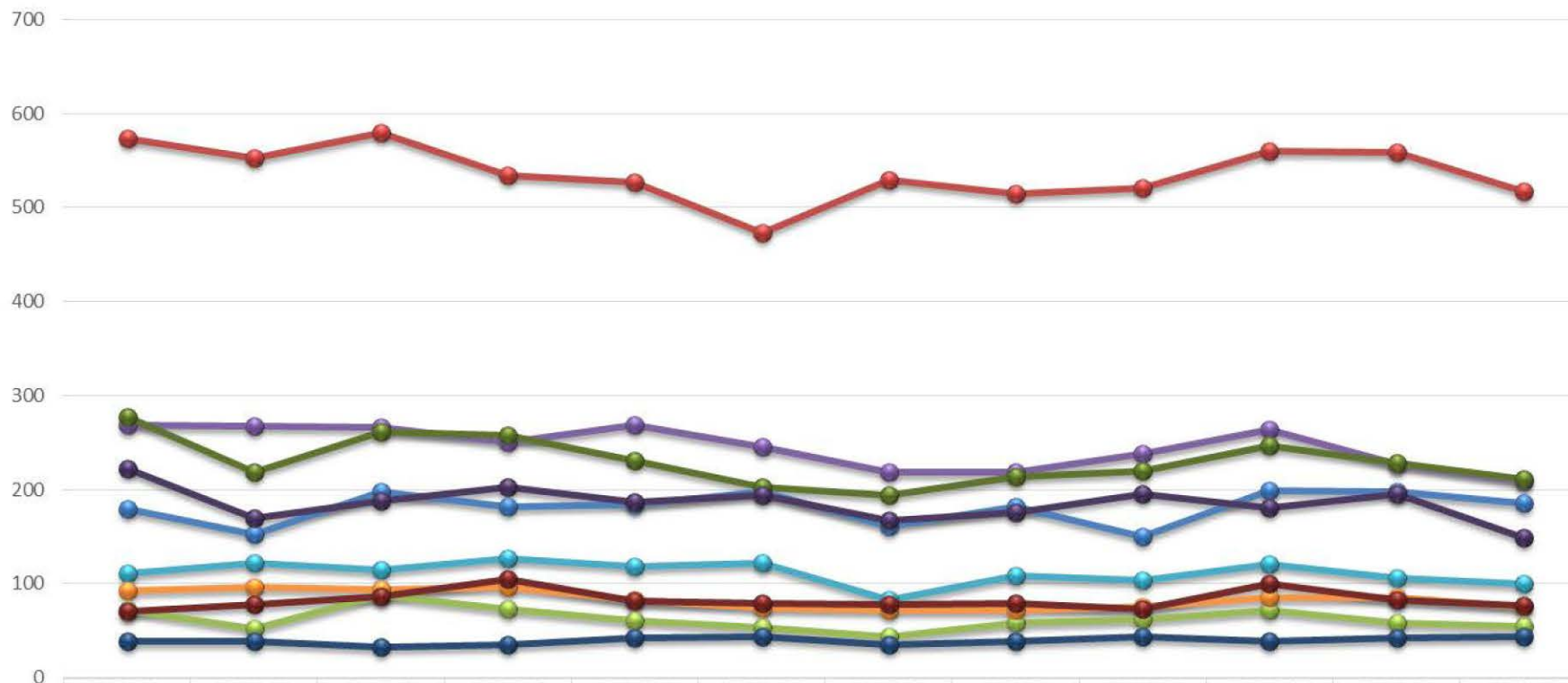
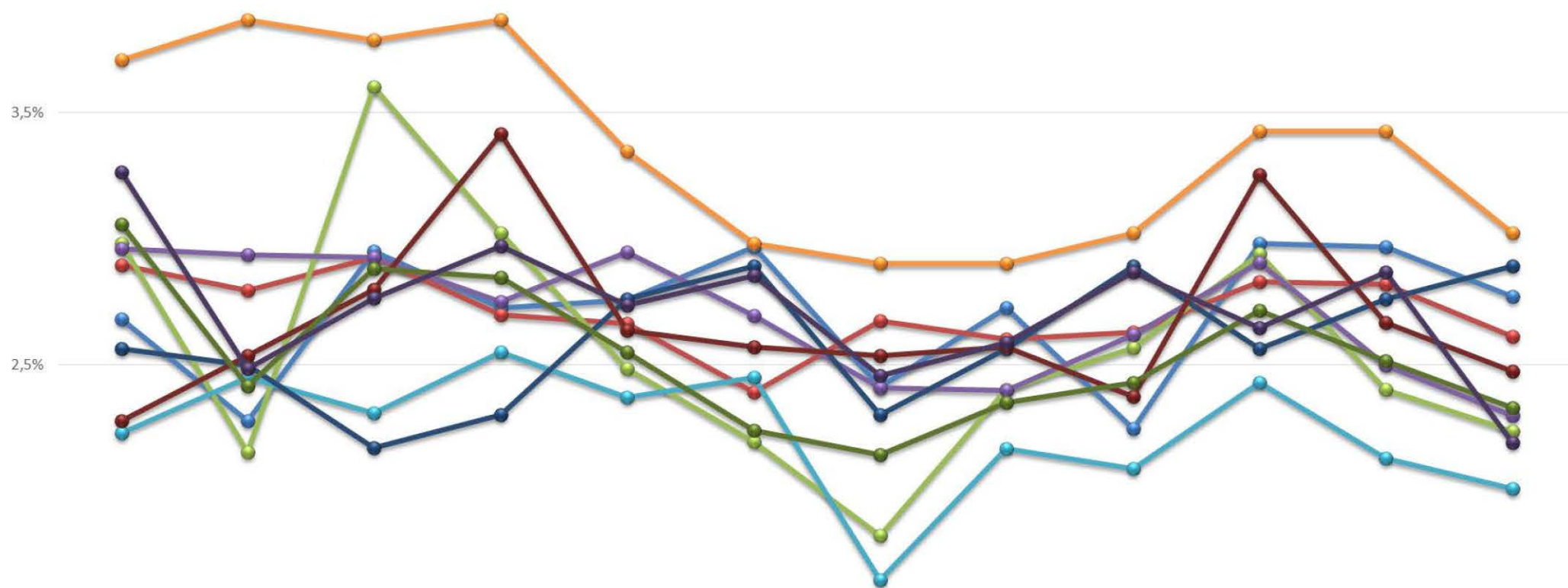


## Antal inskrivna = vårdkontakter 65+ per kommun



	2018-01	2018-02	2018-03	2018-04	2018-05	2018-06	2018-07	2018-08	2018-09	2018-10	2018-11	2018-12
Bollnäs	179	152	197	182	184	198	161	182	150	199	198	185
Gävle	573	553	579	534	527	473	529	515	520	560	558	517
Hofors	72	52	87	73	60	53	44	58	62	71	58	54
Hudiksvall	269	267	266	250	268	245	219	218	238	264	227	209
Ljusdal	111	122	115	127	118	122	82	108	104	121	106	100
Nordanstig	92	96	94	96	83	74	72	72	75	85	85	75
Ockelbo	39	38	33	35	42	44	35	39	44	39	42	44
Ovanåker	70	78	86	105	81	79	78	79	73	100	82	76
Sandviken	277	219	261	258	231	203	194	213	220	246	228	211
Söderhamn	222	169	188	202	186	194	167	176	195	180	195	149

### Andel inskrivna = vårdkontakter 65+ per kommun



1,5%

	2018-01	2018-02	2018-03	2018-04	2018-05	2018-06	2018-07	2018-08	2018-09	2018-10	2018-11	2018-12
Bollnäs	3%	2%	3%	3%	3%	3%	2%	3%	2%	3%	3%	3%
Gävle	3%	3%	3%	3%	3%	2%	3%	3%	3%	3%	3%	3%
Hofors	3%	2%	4%	3%	2%	2%	2%	2%	3%	3%	2%	2%
Hudiksvall	3%	3%	3%	3%	3%	3%	2%	2%	3%	3%	2%	2%
Ljusdal	2%	2%	2%	3%	2%	2%	2%	2%	2%	2%	2%	2%
Nordanstig	4%	4%	4%	4%	3%	3%	3%	3%	3%	3%	3%	3%
Ockelbo	3%	2%	2%	2%	3%	3%	2%	3%	3%	3%	3%	3%
Ovanåker	2%	3%	3%	3%	3%	3%	3%	3%	2%	3%	3%	2%
Sandviken	3%	2%	3%	3%	3%	2%	2%	2%	2%	3%	3%	2%
Söderhamn	3%	2%	3%	3%	3%	3%	2%	3%	3%	3%	3%	2%



## Andelen inskrivna av befolkningen som är över 65 år per kommun

