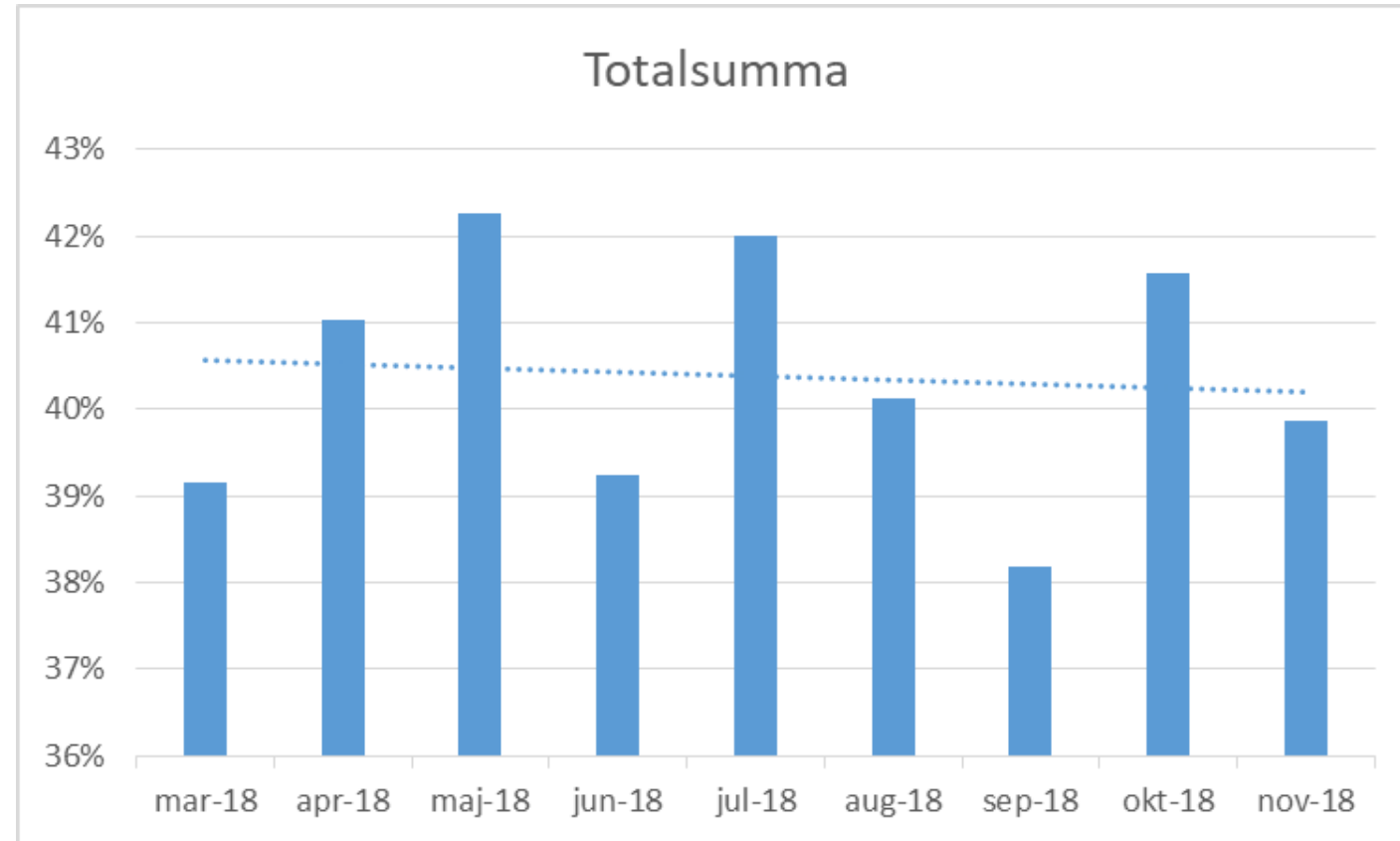


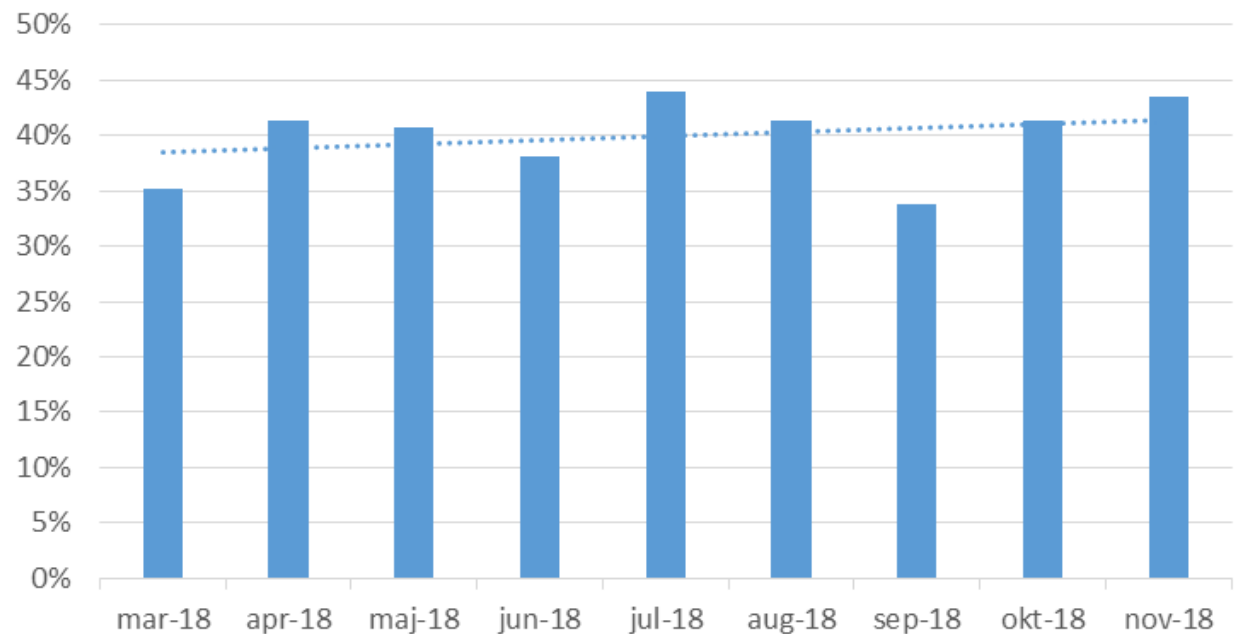
Andelen inskrivningsmeddelanden som skickats inom 24 timmar

Andelen inskrivningsmeddelande som skickas inom 24 timmar

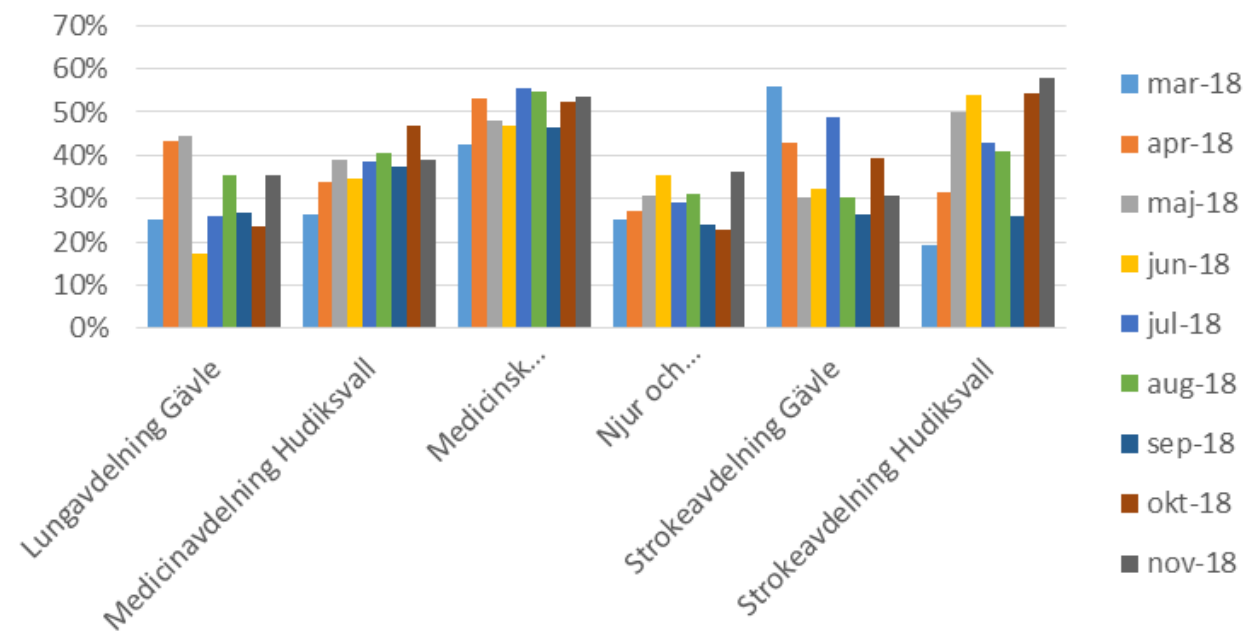
	inom 24	Totalt inskrivna
mar-18	345	881
apr-18	412	1004
maj-18	429	1015
jun-18	359	915
jul-18	373	888
aug-18	372	927
sep-18	333	872
okt-18	397	955
nov-18	360	903
Totalsumma	3380	8360

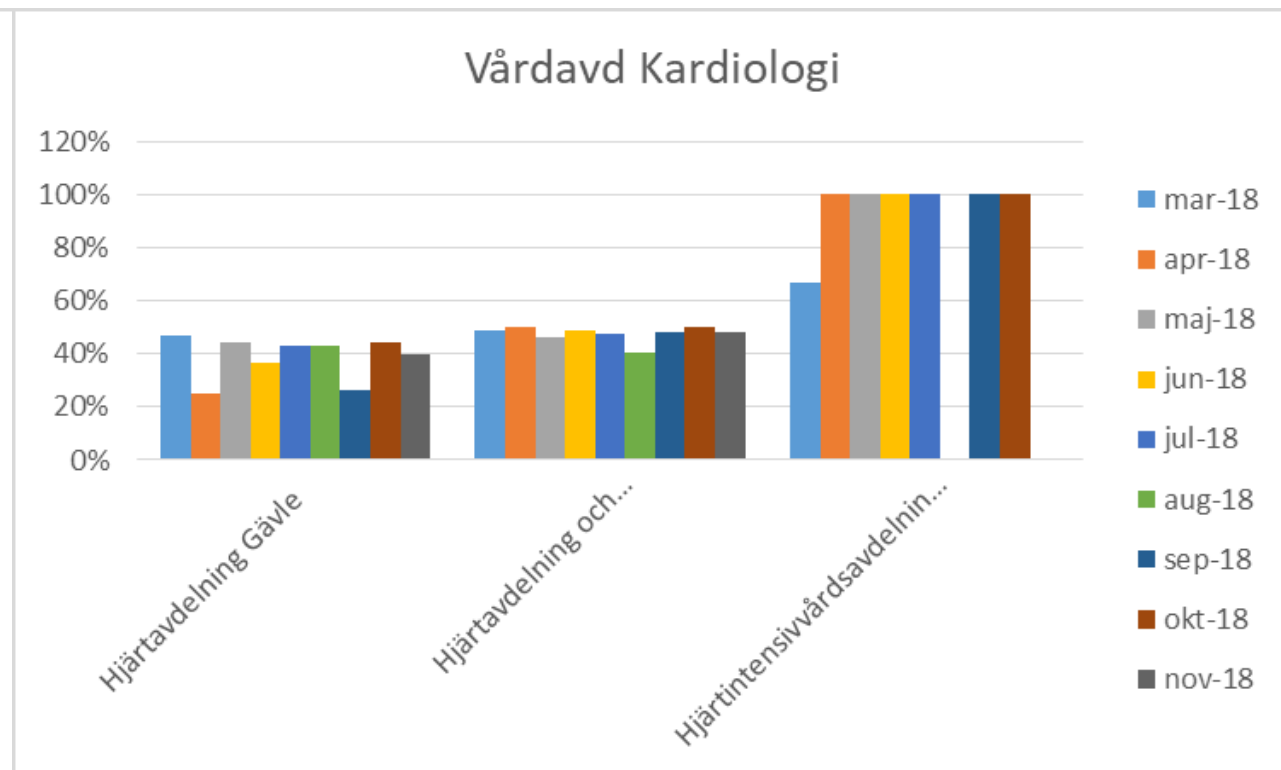
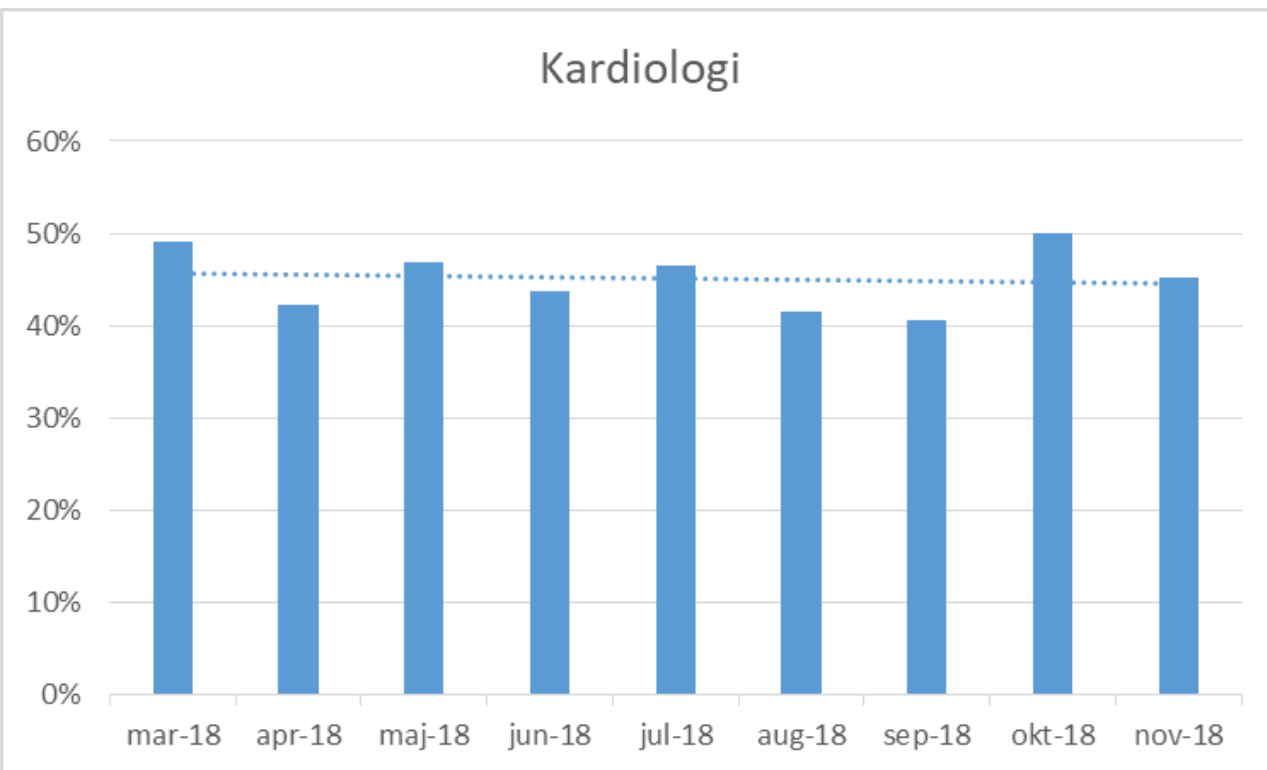


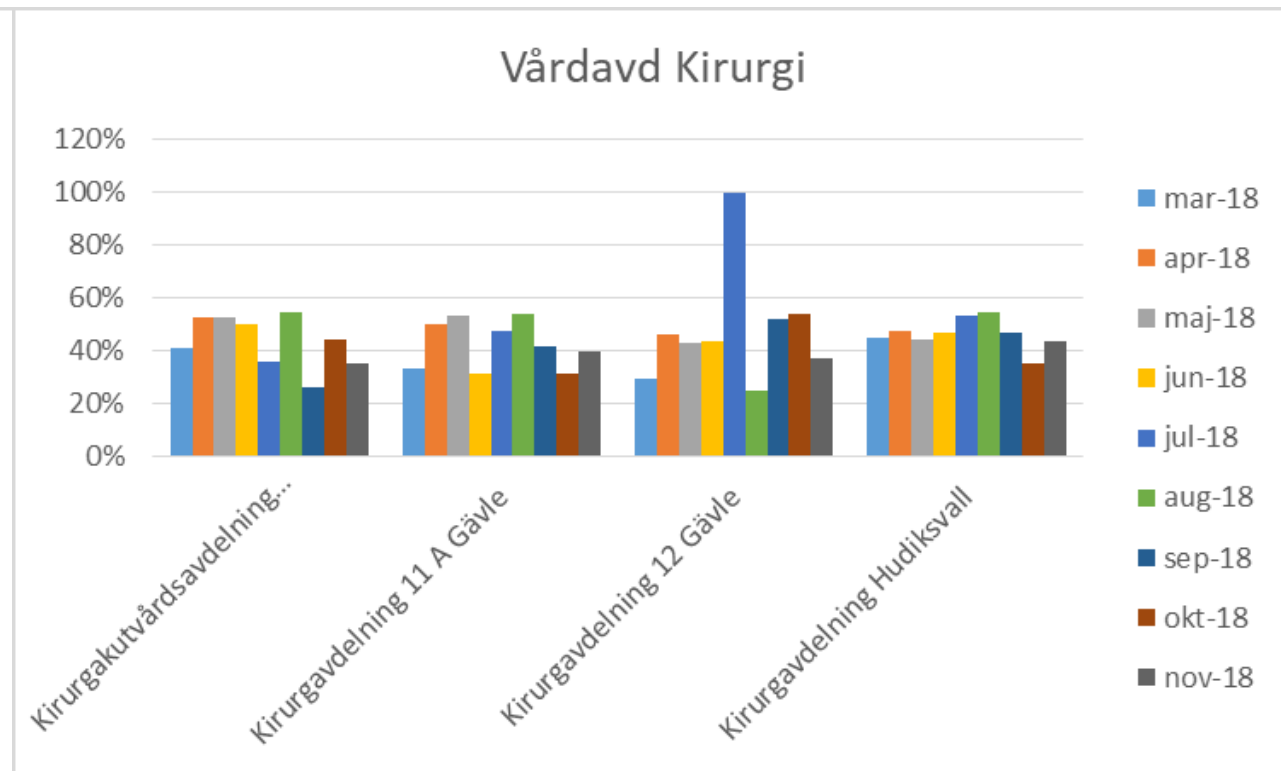
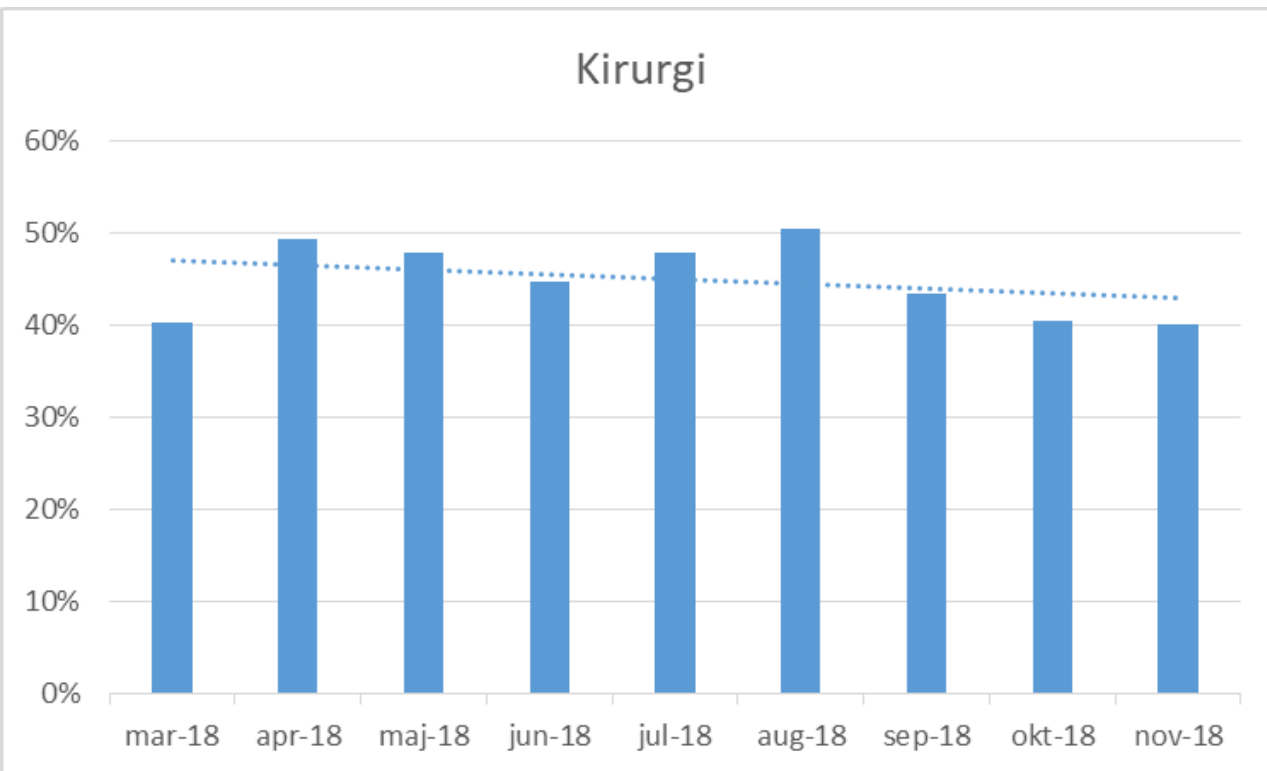
Internmedicin



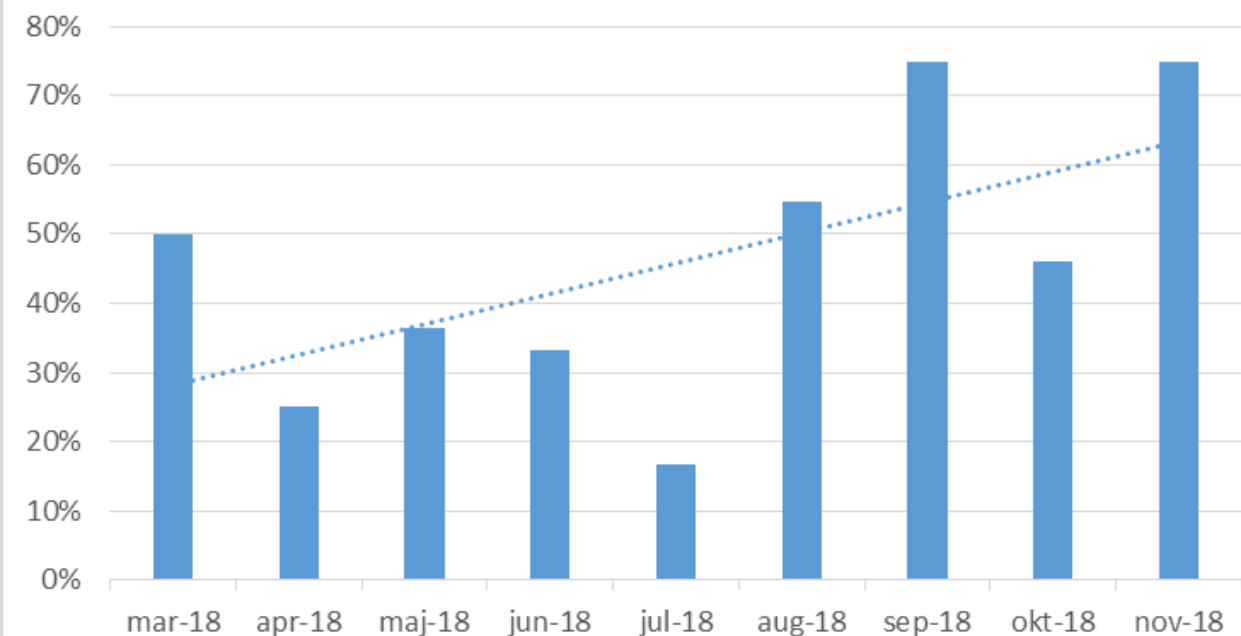
Vårdavd Internmed



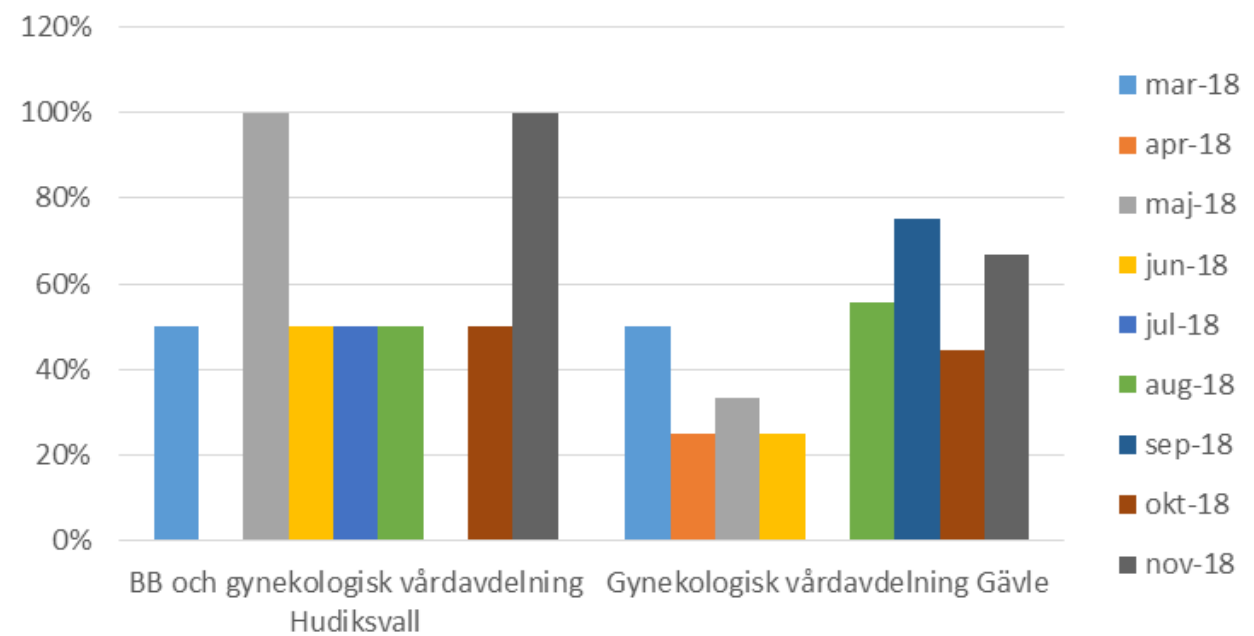


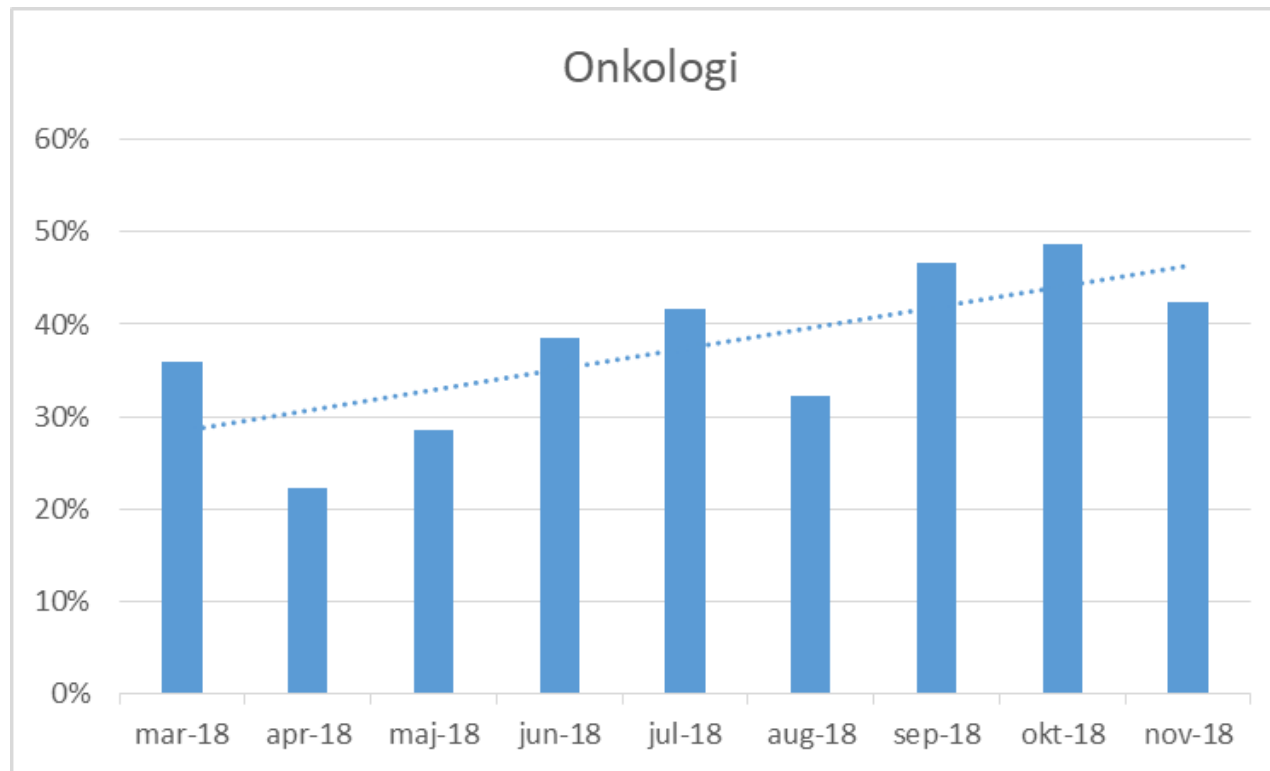


Kvinnosjv

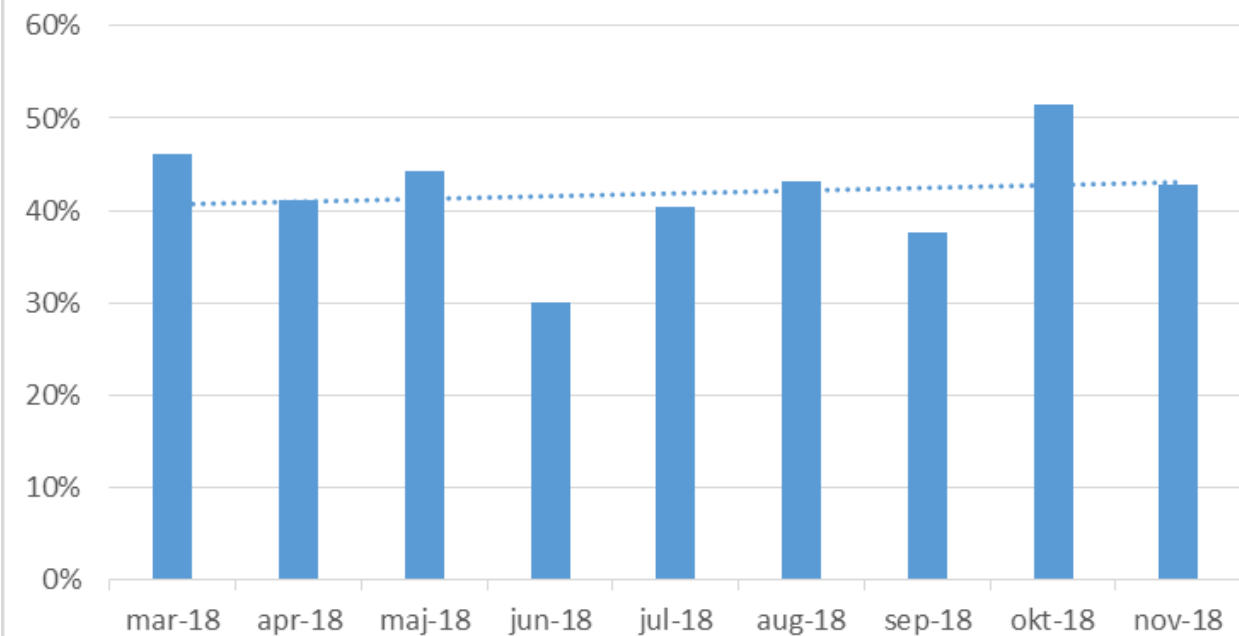


Vårdavd Kvinnosjv

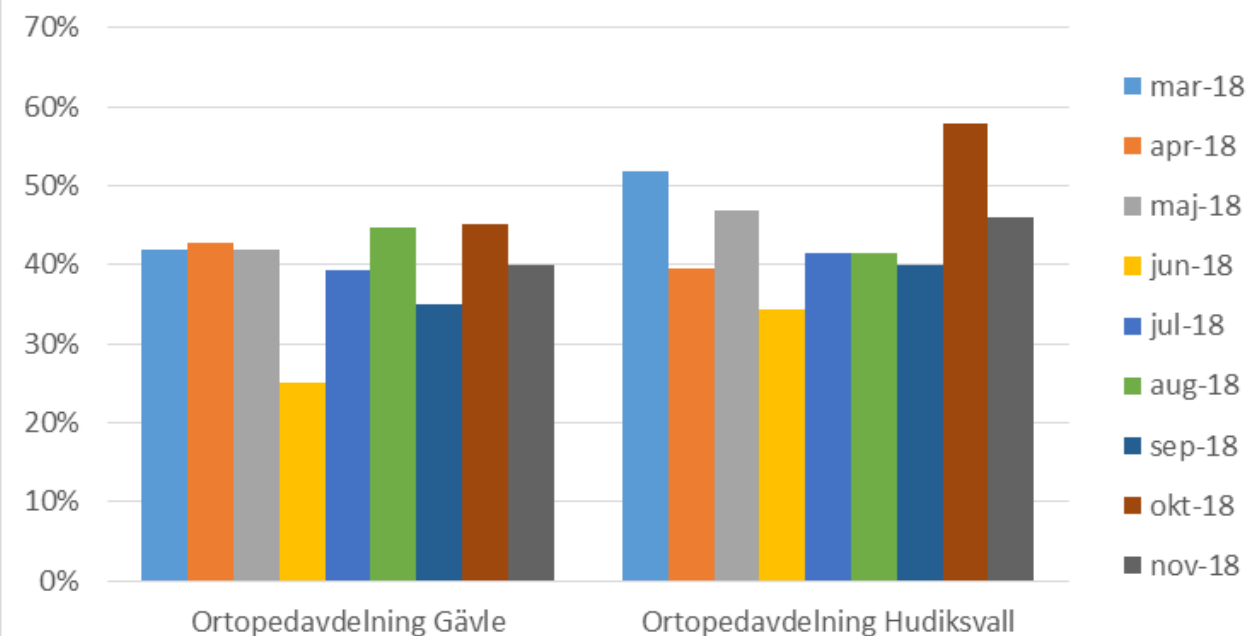




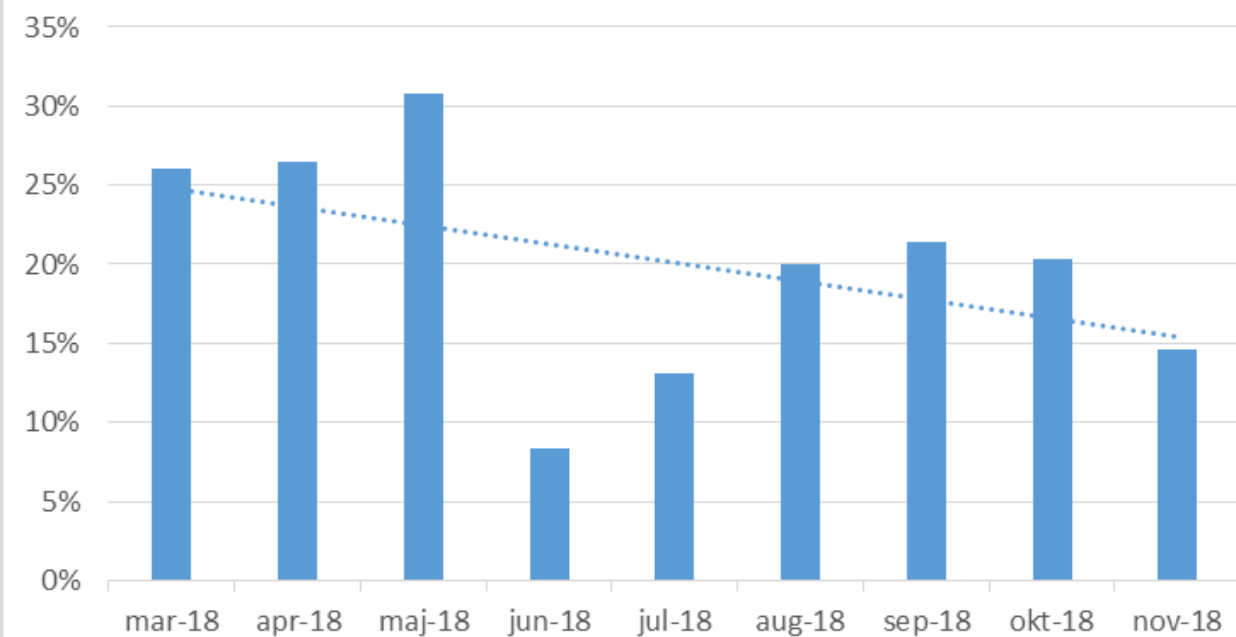
Ortopedi



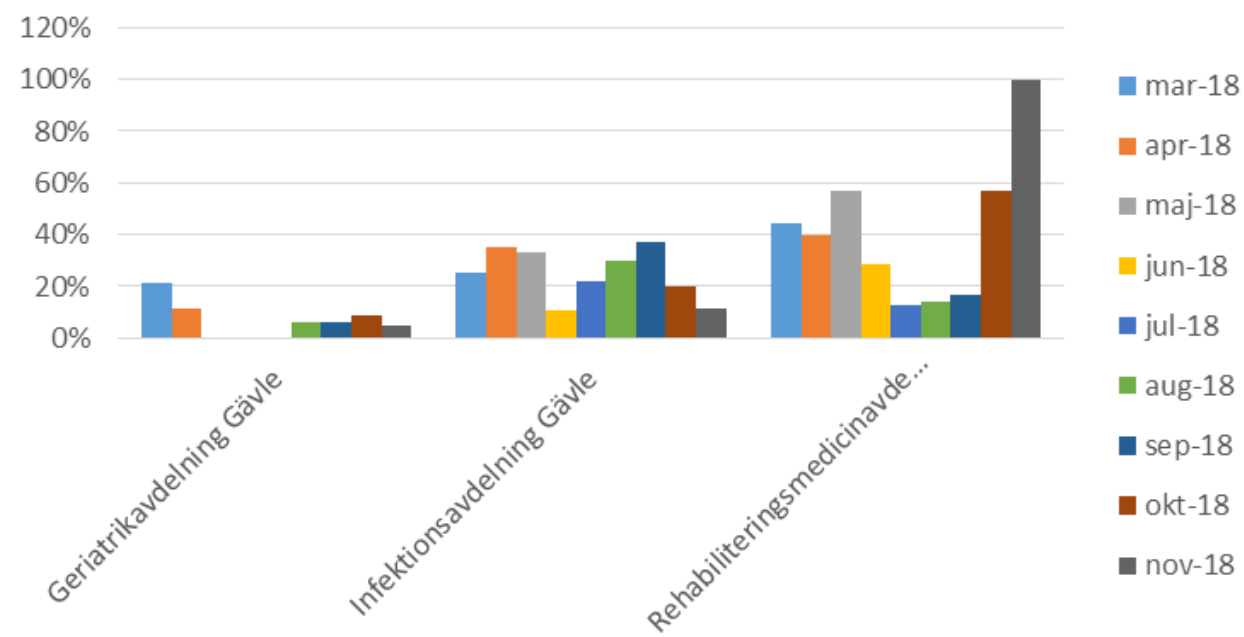
Vårdavd Ortopedi



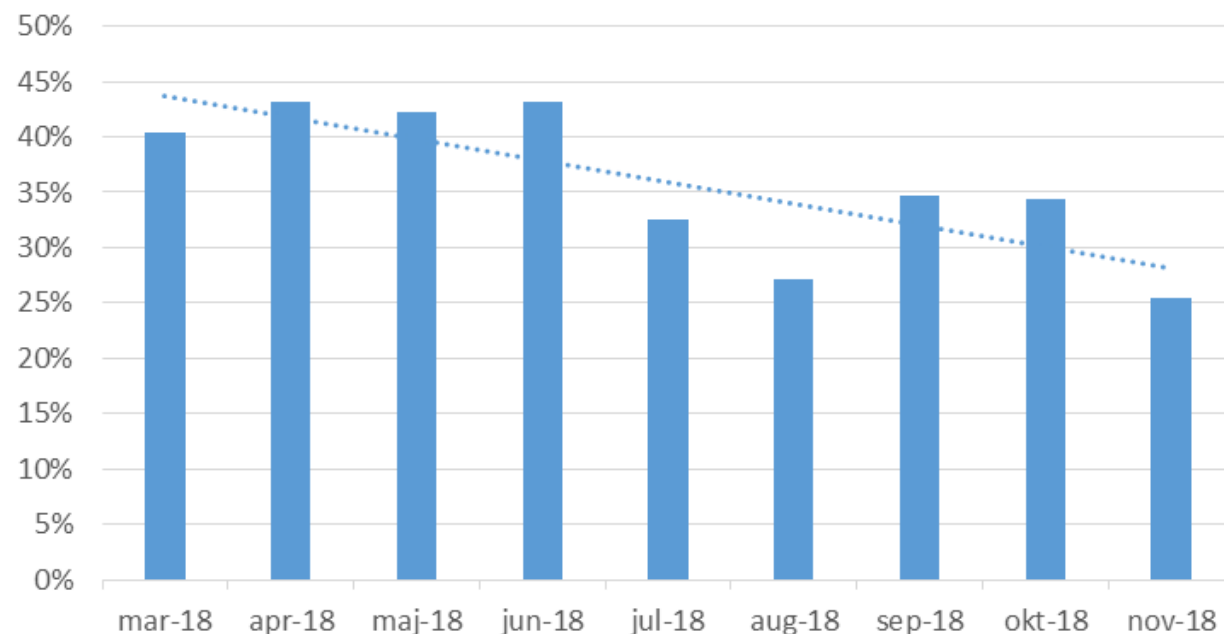
Specialmedicin



Vårdavd Specialmedicin



Vuxenpsykiatri



Vårdavd Vuxenpsykiatri

